

* G1-6 *

Winter School

2022-23

Dec 19th > Jan 06th

A magical season,
a magical time.

Let's celebrate another year of life,
As a long year's journey again
nears its end. Though the cold of
the winter may at times cause us
strife, we'll stay warm inside with
our friends and mend! At this
precious time of togetherness and
hope, we'll continue to keep the coals
of our minds turning. From the
cold of the season our minds can
elope, to our Magical Winter school,
where we'll share



Morning: 8.30am-2.00pm Full-Day: 8.30am-
4.00pm Extended Day: 8.30am-6.00pm



STEAM LAB + E

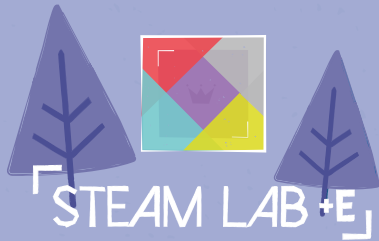


For more info!

3-11-4 Minamiazabu, Minato-ku Tokyo, 106-0047

✉ info@giftedschooltokyo.com

f [steamlabtokyo](https://www.facebook.com/steamlabtokyo)



APPLICATION FORM

Winter school

From Dec 19th to Jan 06th

Join us for a magical, wonderful season!

Applicant information

First name	Last name
Date of Birth	Parent or Guardian Name
Address	
E-mail Contact	Phone Contact

Winter school Sessions

- Please choose the type of session you would like to attend

Morning M/F 8:30 am - 2:00 PM
 Full-day (M/F 8:30 am - 4:00 PM)
 Extended day (M/F 8:30 am - 6:00 PM)

- Please choose the week you would like to attend

Session 1 | Dec 19th to Dec 23rd

Session 2 | Dec 26th to Dec 28th

Session 3 | Jan 04th to Jan 06th

Our Service

*Morning/Afternoon Snack ¥200 each | *Lunch ¥600 | *If you need School Van Service (One-way ¥1,500/each)
Please contact the school directly for further information at info@giftedschooltokyo.com

- Morning Snack
 Lunch
 Afternoon Snack
 School Van Service (One-Way)
 School Van Service (Round-Way)
 Pick up
 Drop-off

Desired Pick-up Point _____ Drop-off Point _____

*Please note that for the School Van Service we will get back to you with the options as we need to fit to our current route.

Special Requests: If you would prefer irregular schedule and types of session, please indicate below

Tuition

MEMBERS	Morning Session	Full-Day Session	Extended Day	NON MEMBERS	Morning Session	Full-Day Session	Extended Day
Weekly (Session 1 only)	¥55,000	¥60,000	¥65,000	Weekly	¥65,000	¥70,000	¥75,000
Daily (Session 1)	¥12,000	¥13,000	¥14,000	Per Day	¥14,000	¥15,000	¥16,000
Daily (Session 2/3)	¥13,000	¥14,000	¥15,000	Per Day	¥15,000	¥16,000	¥17,000

*Seasonal school fees are non refundable. Any change has to be made before December 1st.